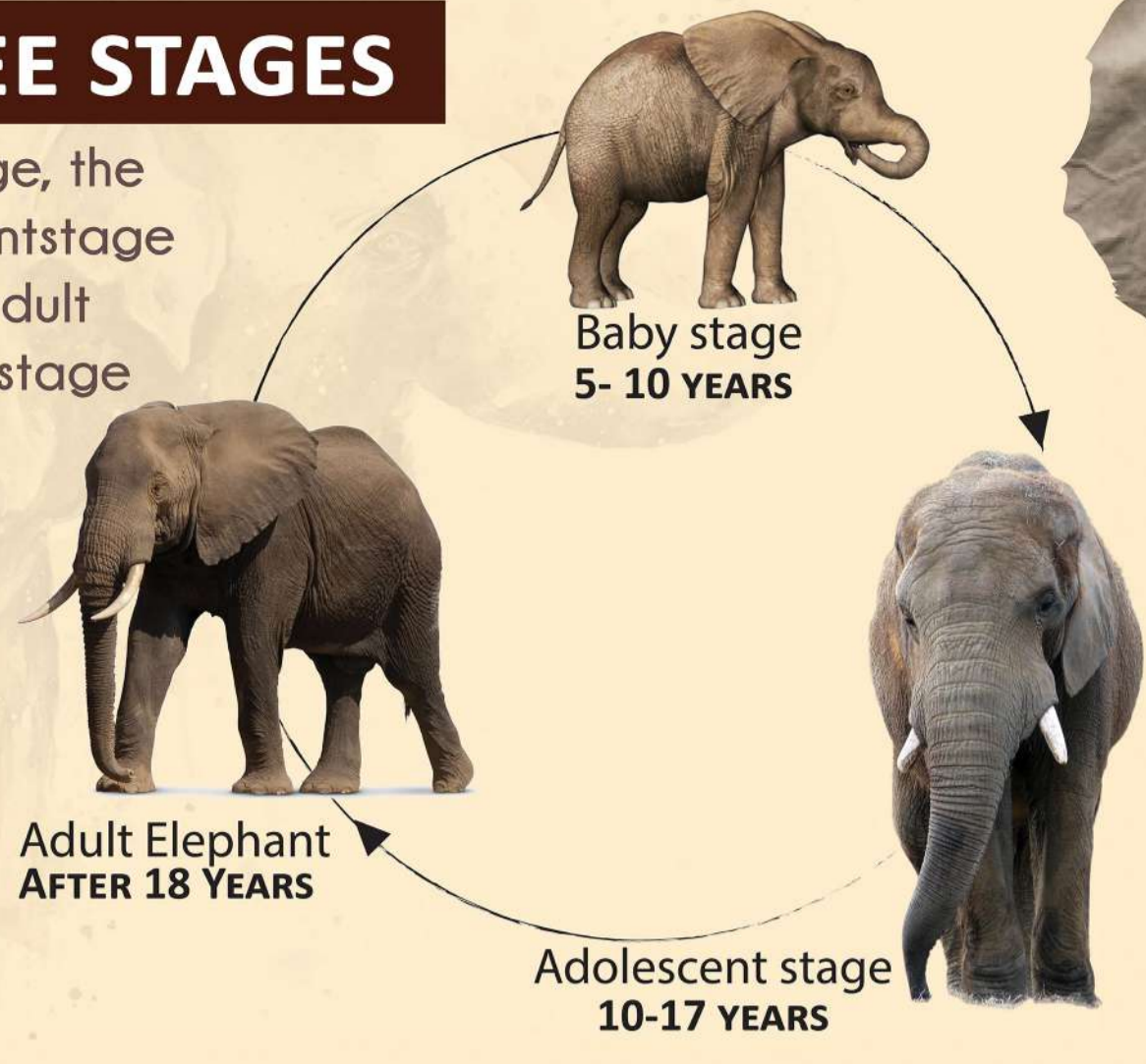


THE LIFE CYCLE OF THE African Elephant

THREE STAGES

Baby stage, the adolescent stage and the adult elephant stage



BABY STAGE

For the first 3 to 5 years, most elephant calves are totally dependent on their mothers for their nutrition, hygiene, migration and health

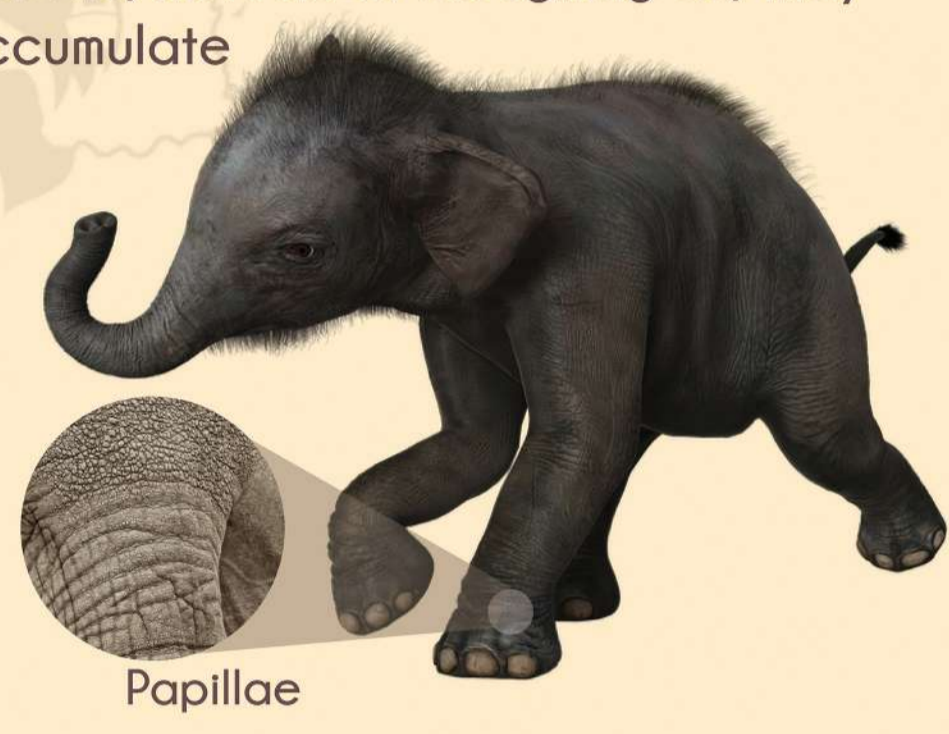
BODY CONSTRUCTION

Elephants are born with an untracked skin surface & an uneven sub layer with protrusions known as papillae. When skin cells die, instead of sloughing off, they accumulate



Born Period
22 Months

Baby Stage
5- 10 years

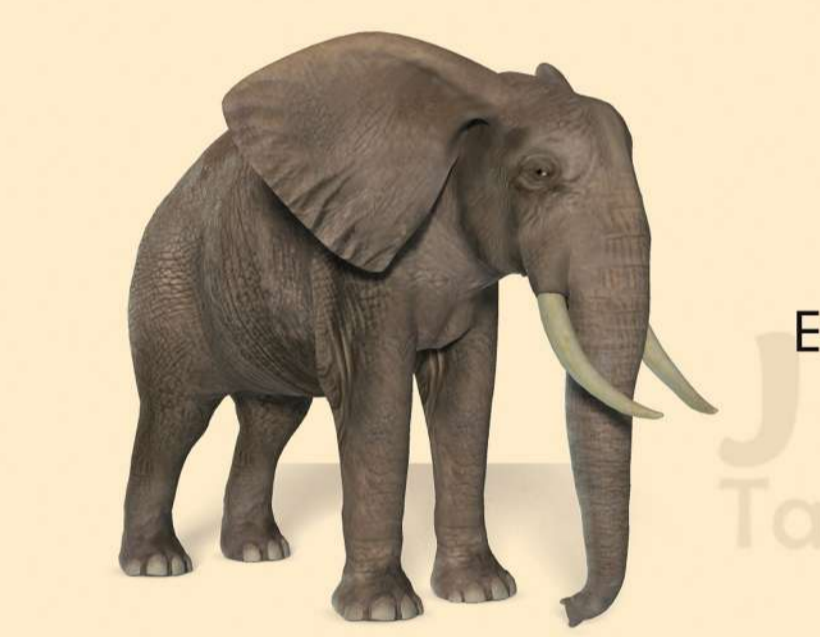


Papillae

ADULTHOOD STAGE AFTER 18 YEARS

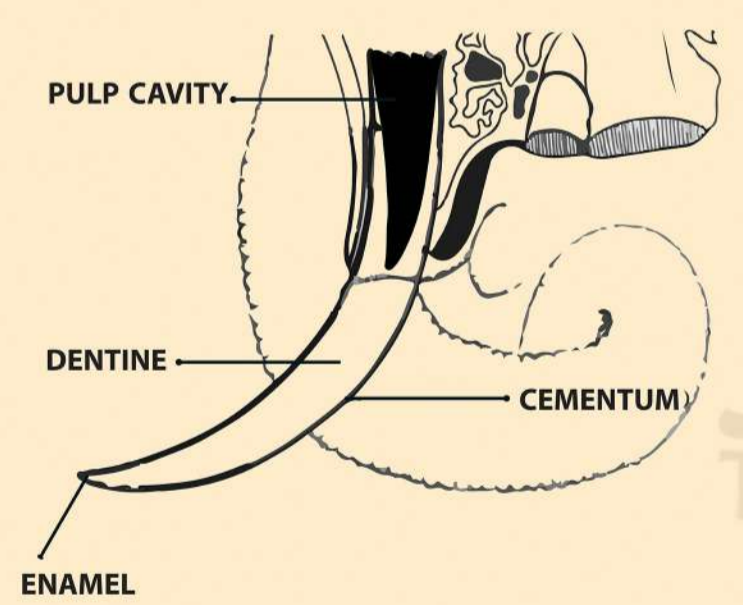
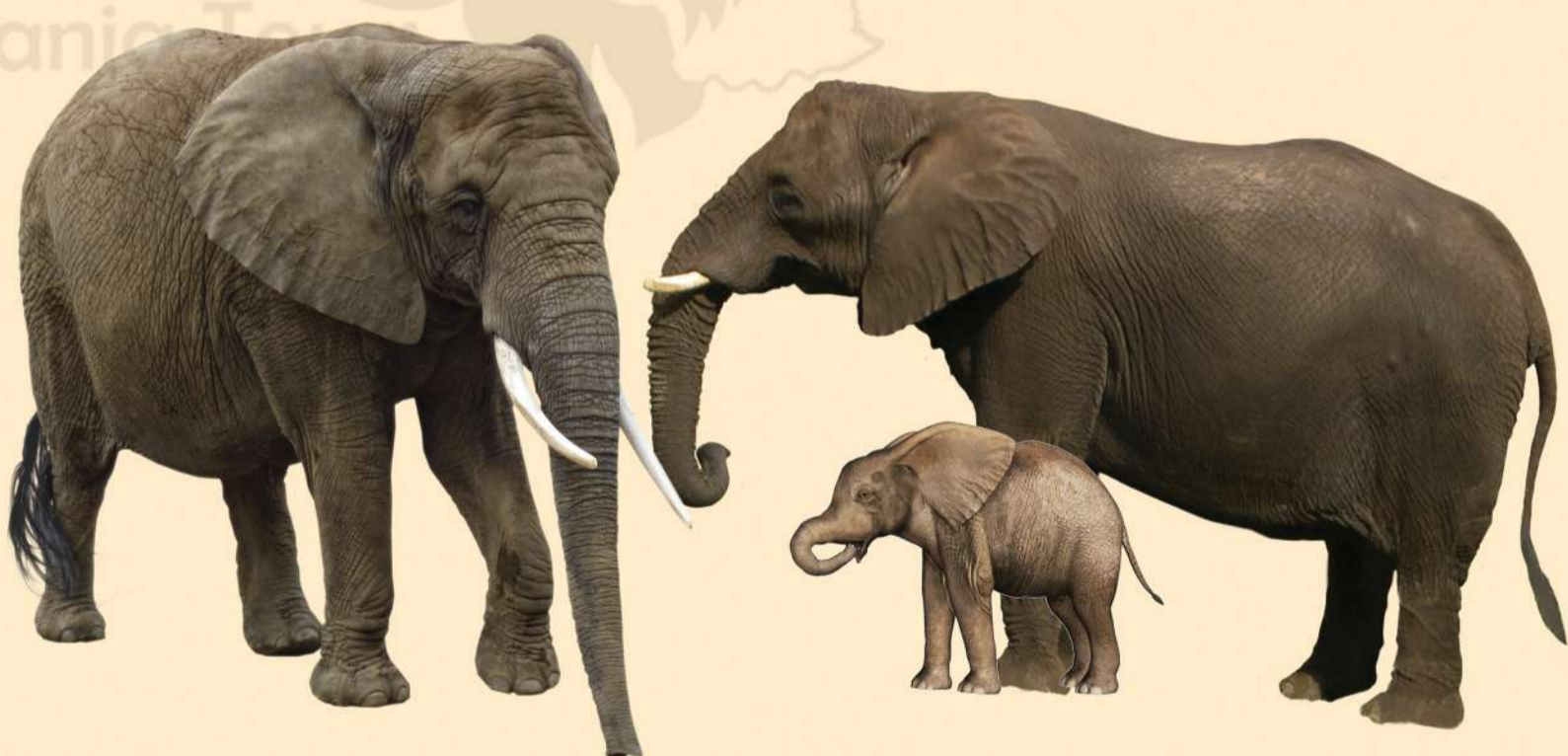
Elephant has an average life expectancy of 70 years

Elephants generally only start to mate at about 20 years and stop bearing calves at about 50



ADOLESCENT STAGE 10-17 YEARS

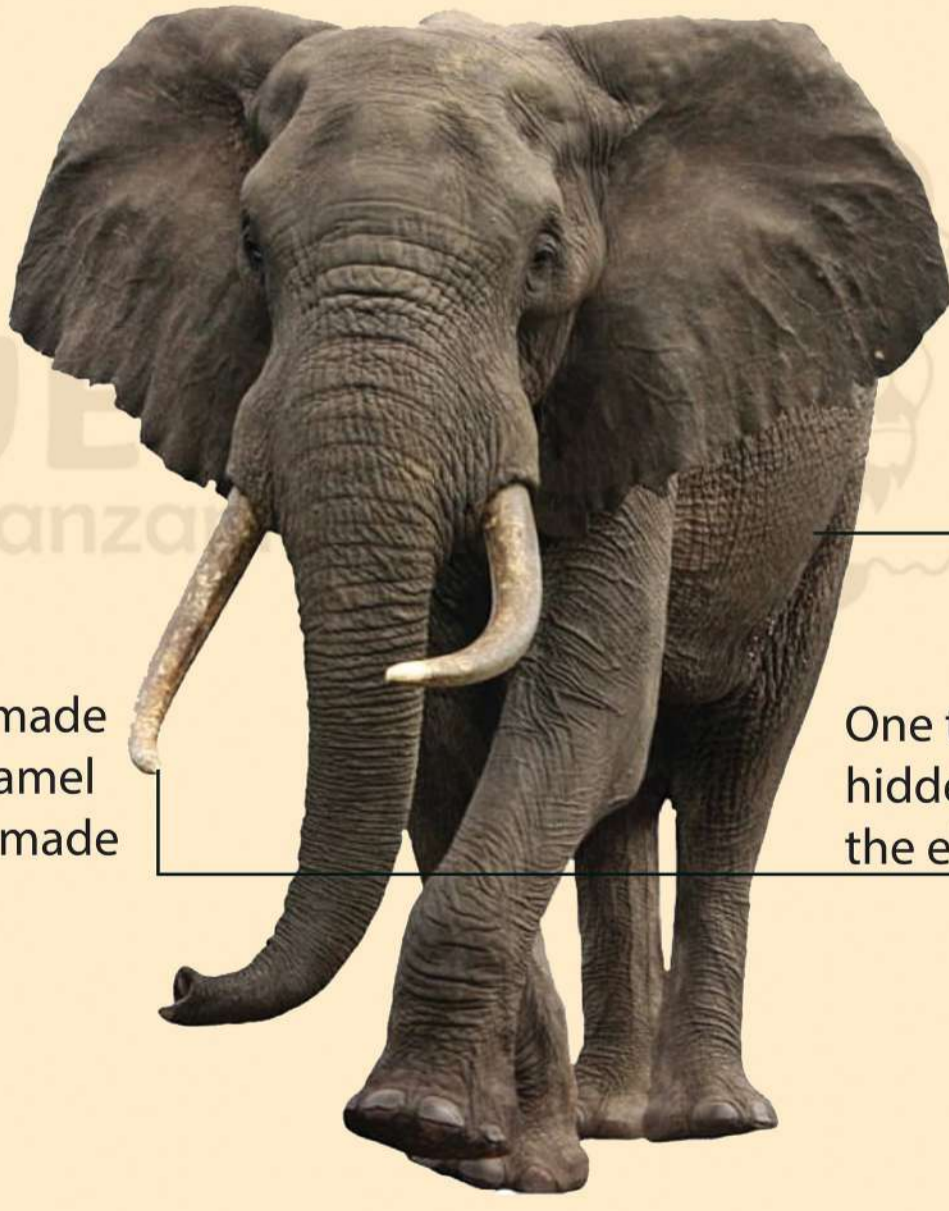
The Time When young elephant Begin to break away from the Main Herd
The Time When they Get the sexual Maturity



The visible, ivory part of the tusk is made of dentine with an outer layer of enamel while the inner part is a pulp cavity made up of tissue, blood and nerves

BODY

As elephant age, the layers of accumulated skin cells over the dermis become thicker which crack the skin & creates a network of Chanel in which water moves by capillary action



One third of the tusk is actually hidden from view, embedded deep in the elephant's head.



CONTACT US

Moshi, Tanzania

+255 742 799 217

info@jerrytanzaniatours.com

www.jerrytanzaniatours.com